

**RESOLUTION 2015-133**

**A RESOLUTION OF THE COUNTY COUNCIL OF VOLUSIA COUNTY, FLORIDA, RELATING TO THE BOUNDARIES OF THE INDIAN RIVER LAGOON NATIONAL ESTUARY PROGRAM; PROVIDING AN EFFECTIVE DATE.**

**WHEREAS**, the EPA National Estuary Program (NEP) was established in 1987 under the Clean Water Act Amendments (CWA) to restore and maintain the water quality and ecological integrity of estuaries of national significance; and

**WHEREAS**, the NEP looks broadly across the watershed and recognizes the connection between upstream sources of pollution and downstream impacts; and

**WHEREAS**, the NEP targets a broad range of issues and engages local communities in the process to maintain the integrity of the whole system, which includes its chemical, physical, and biological properties, as well as its economic, recreational, and aesthetic values; and

**WHEREAS**, current northern boundary of the Indian River Lagoon (IRL) NEP is Ponce DeLeon Inlet; and

**WHEREAS**, the study area for a successful ecosystem-based management program should include connecting estuarine environments; and

**WHEREAS**, six (6) of Volusia County's sixteen (16) drainage basins contribute to the Halifax River, including the Outstanding Florida Waters of the Tomoka River and Spruce Creek, and

**WHEREAS**, those six (6) drainage basins cover an area of approximately 198,678 acres; and

**WHEREAS**, the Halifax River merges with Spruce Creek and the Mosquito Lagoon and is an integrated estuarine system which requires a holistic approach to insure the health and success of these waterways; and

**WHEREAS**, the County of Volusia requests IRL Council consideration for a boundary amendment to extend the study area and management boundary of the IRL NEP north to the LB Knox Bridge, commonly known as High Bridge, in Volusia County.

**NOW, THEREFORE, BE IT RESOLVED BY THE COUNTY COUNCIL OF VOLUSIA COUNTY, FLORIDA, IN OPEN MEETING DULY ASSEMBLED IN THE THOMAS C. KELLY ADMINISTRATION CENTER, DELAND, FLORIDA THIS 5th DAY OF NOVEMBER, 2015, AS FOLLOWS:**

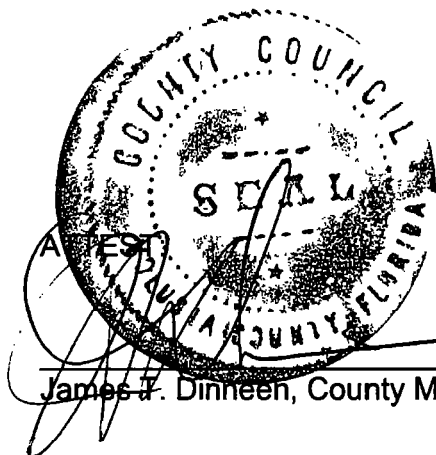
**Section 1.** The County of Volusia requests the IRL Council make a formal request for a boundary amendment to extend the study area and management boundary of the IRL NEP north to the LB Knox Bridge, commonly known as High Bridge, in Volusia County.

**Section 2.** The County of Volusia staff shall assist IRL Council in its efforts to work with the U.S. EPA to restructure and re-convene the new management conference for the IRL NEP.

**Section 3.** The County of Volusia shall submit this resolution to the IRL Council requesting an amendment to the IRL NEP boundary with specific extensions delineated on the map attached hereto as Attachment A.

**Section 4.** The provisions of this Resolution shall be effective immediately.

**DONE AND ORDERED IN OPEN MEETING.**



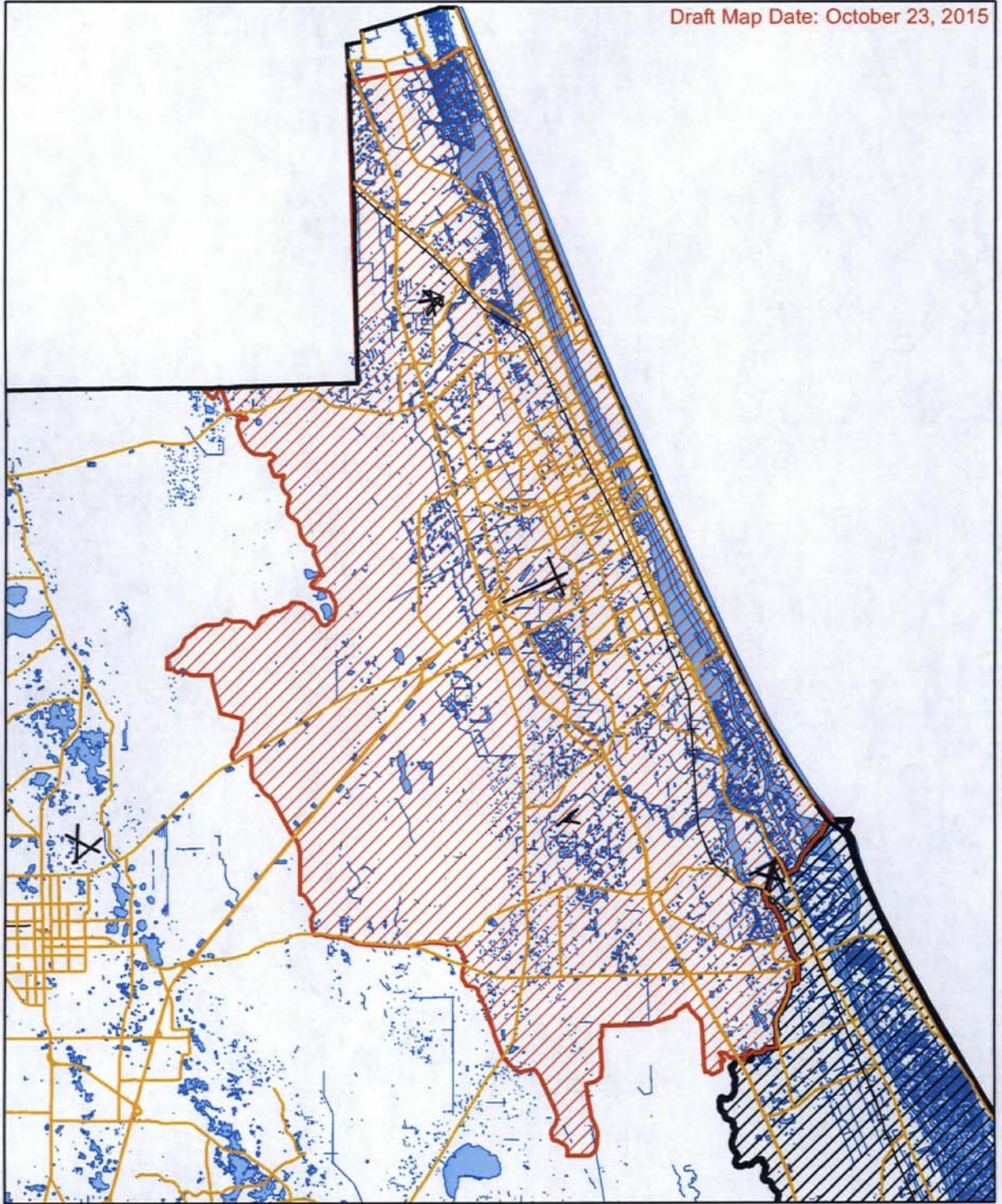
James F. Dinneen, County Manager


COUNTY COUNCIL  
VOLUSIA COUNTY, FLORIDA


By Jason P. Davis, County Chair

# Attachment A

Draft Map Date: October 23, 2015



 Proposed Expansion of NEP Boundary

 Indian River Lagoon National Estuary Program (Existing)

1 in = 4.5 miles



Map prepared by: Volusia County Growth & Resource Management Department